

ACT20X-HUI-SAO-S

Weidmüller Interface GmbH & Co. KG

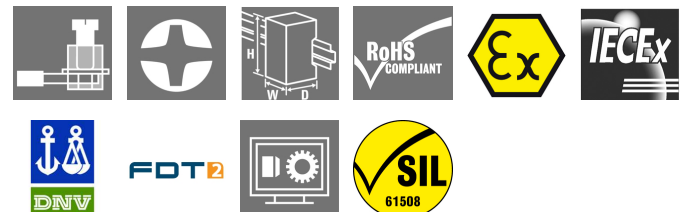
Klingenbergstraße 26

D-32758 Detmold

Germany

www.weidmueller.com

Product image, Similar to illustration



The ACT 20X HUI-SAO-S/ SAO-LP universal measurement and signal isolating converters can be configured individually.

Temperature signals from PT100 sensors and thermocouples as well as analogue DC current and voltage signals can be recorded from Ex zone 0.

On the output side, optional current/voltage (SAO-S) or 4...20 mA current loop signals (SAO-LP / SAO-S) are provided for the safe zone.

The ACT20X-HUI-SAO-S also has a relay output for configuring its switching threshold.

An integrated alarm contact is available on this device for issuing an alert in the event of a malfunction. This makes troubleshooting easier and also increases system availability.

The power supply of the signal isolating converter is either done using the integrated power supply (SAO-S) or alternatively over the output-side current loop (SAO-LP).

The rail mountable devices are designed with one channel, and are optionally available in widths of 12.5 mm (SAO-LP) or 22.5 mm (SAO-S).

General ordering data

Version	EX signal isolating converter, Ex-output: U, I, R,9, Safe-output: 4-20mA/ relay, 1-channel
Order No.	8965490000
Type	ACT20X-HUI-SAO-S
GTIN (EAN)	4032248785100
Qty.	1 pc(s).

ACT20X-HUI-SAO-S

Weidmüller Interface GmbH & Co. KG

Klingenbergstraße 26

D-32758 Detmold

Germany

www.weidmueller.com

Technical data

Dimensions and weights

Depth	113.6 mm	Depth (inches)	4.472 inch
Height	119.2 mm	Height (inches)	4.693 inch
Width	22.5 mm	Width (inches)	0.886 inch
Net weight	202 g		

Temperatures

Storage temperature	-20 °C...85 °C	Operating temperature	-20 °C...60 °C
Operating temperature, min.	-20 °C	Operating temperature, max.	60 °C
Humidity	0...95 % (no condensation)		

Probability of failure

SIL PAPER	SIL certificate	SIL in compliance with IEC 61508	2
MTBF	74 Years		

Input EX

Input current	0...20 mA, 4...20 mA	Input resistance	configurable, 0... 10 kΩ
Input resistance, current	20 Ω + PTC 50 Ω	Input resistance, voltage	> 10 MΩ @ 600 mV, 2 MΩ @ 28 V
Input voltage	configurable, 0...1 V DC, 0,2...1 V DC, 1...5 V DC, 0...(5)10 V, 2...10 V DC	Line resistance in measuring circuit	≤ 50 Ω
Potentiometer		Sensor	2-/3-/4-wire, RTD: PT10, PT20, PT50, PT100, PT250, PT300, PT400, PT500, PT1000, Ni50, Ni100, Ni120, Ni1000, Thermocouples: B, E, J, K, N, R, S, T ; in compliance with IEC 60584-1 and L, U in compliance with DIN43710, Potentiometer, Resistance: 0 - 12 kΩ
Sensor supply	10 Ω... 10 kΩ	Temperature input range	Configurable, PT100: -200...+850 °C, PT200: -200...+850 °C, PT1000: -200...+850 °C, NI100: -60°C...+250 °C, Ni120: -80 °C...+320 °C, NI1000: -60°C...+250 °C, B: +100...+1820 °C, E: (-100...+1000 °C), J: (-100...+1200 °C), K: (-180...+1372 °C), L: (-200...+900 °C), N: (-180...+1300 °C), R: (-50...+1760 °C), S: (-50...+1760 °C), T: (-200...+400 °C), U: (-200...+600 °C), W3: (0...+2300 °C), W5: (0...+2300 °C), LR: (-200...+800 °C)
Type	21.4...16.5 V DC / 0...20 mA intrinsically safe circuit, active (as current source) or passive (as current sink)		

ACT20X-HUI-SAO-S

Weidmüller Interface GmbH & Co. KG

Klingenbergstraße 26

D-32758 Detmold

Germany

www.weidmueller.com

Technical data

Output

Influence of load resistance	$\leq 0.01\%$ of span / 100 Ω	Load impedance current	$\leq 600 \Omega$
Output current	0...23 mA, configurable: 0...20 / 4...20 / 20...4 mA, configurable downscale (3.5 mA) / upscale (23 mA) @ error	Output signal limit	3.8...20.5 mA / 0...20.5 mA (dependent on range)
Type	active (as current source) or passive (as current sink)		

Digital output

Continuous current	≤ 2 A AC/DC (safe area, Zone 2 area)	Function	Configurable switching thresholds, Window function, Sensor error
Nominal switching voltage	≤ 250 V AC / 30 V DC (safe area) ≤ 32 V AC / 32 V DC (zone 2)	Power rating	≤ 500 VA / 60 W (safe area) ≤ 16 VA / 32 W (Zone 2)
Type	Relay, 1 NO		

Alarm output

Alarm function	Short circuit at input, Open circuit at input, No supply voltage, Device error	Continuous current	≤ 0.5 A AC / 0.3 A DC (safe zone), ≤ 0.5 A AC / 1 A DC (zone 2)
Nominal switching voltage	≤ 125 V AC / 110 V DC (safe area) ≤ 32 V AC / 32 V DC (zone 2)	Power rating	≤ 62.5 VA / 32 W (safe area) ≤ 16 VA / 32 W (Zone 2)
Type	Status relay, 1 NC (voltage- free)		

General specifications

Configuration	With FDT/DTM software, Requires configuration adapter 8978580000 CBX200 USB	Humidity	0...95 % (no condensation)
Power consumption	≤ 2.1 W	Protection degree	IP20
Type of connection	Screw connection	Voltage supply	19.2...31.2 V DC

Insulation coordination

EMC standards	DIN EN 61326, NE 21	Insulation voltage	2.6 kV (input / output)
Pollution severity	2	Rated voltage	300 V

Data for Ex applications (ATEX)

Current I_0	18.4 mA	Installation location	Device installed in safe area, zone 2
Marking	II (1) G [Ex ia Ga] IIC/IIB/ IIA, I (M1) [Ex ia Ma] I, II (1) G [Ex ia Ga] IIC, II (1) D [Ex ia Da] IIIC	Power P_0	40 mW
Voltage U_0	8.7 V DC		

Creation date January 28, 2023 4:11:55 PM CET

Catalogue status 24.01.2023 / We reserve the right to make technical changes.

3

ACT20X-HUI-SAO-S

Weidmüller Interface GmbH & Co. KG

Klingenbergstraße 26

D-32758 Detmold

Germany

www.weidmueller.com

Technical data

Safety-related basic specifications

Description of the "safe state"	analogue Output ≤ 3.6 mA or output ≥ 21 mA, de-energized (relay output)	Device type	B
Diagnostic test interval	30 s	T_{proof}	4 Years
Total failure rate for safe detected failures (λ_{SD})	0 FIT	Hardware fault tolerance (HFT)	0
Safety category	SIL 2	Relay lifetime	100000 times
Safe Failure Fraction (SFF)	93 %	Mean Time To Repair (MTTR)	24 h
Total failure rate for safe undetected failures (λ_{SU})	278 FIT	Total failure rate for dangerous detected failures (λ_{DD})	352 FIT
Total failure rate for dangerous undetected failures (λ_{DU})	43 FIT	Probability of outage PFH	$4.33 \times 10^{-8} \text{ h}^{-1}$
Demand mode	High	Demand rate	3,000 s
Demand response time	Signal input: < 0.5 s (opto output), Temperature input: < 1.1 s (opto output)		

Safety-related specifications Low demand mode

Average Probability of Failure on Demand ($PF_{D_{avg}}$)	2.82 x 10^{-4} ($T_{proof} = 1$ year), 4.63 x 10^{-4} ($T_{proof} = 2$ years), 1.00 x 10^{-3} ($T_{proof} = 5$ years), additional data in the safety manual
---	--

Connection data

Type of connection	Screw connection	Tightening torque, min.	0.4 Nm
Tightening torque, max.	0.6 Nm	Clamping range, rated connection	2.5 mm ²
Clamping range, min.	0.25 mm ²	Clamping range, max.	2.5 mm ²
Wire connection cross section AWG, min.	AWG 26	Wire connection cross section AWG, max.	AWG 12

Guarantee

Time interval	3 years
---------------	---------

Classifications

ETIM 6.0	EC002653	ETIM 7.0	EC002653
ETIM 8.0	EC002653	ECLASS 9.0	27-21-01-20
ECLASS 9.1	27-21-01-20	ECLASS 10.0	27-21-01-20
ECLASS 11.0	27-21-01-20	ECLASS 12.0	27-21-01-20

ACT20X-HUI-SAO-S

Weidmüller Interface GmbH & Co. KG

Klingenbergstraße 26

D-32758 Detmold

Germany

www.weidmueller.com

Technical data

Tender specification sheets

Long specification

Short specification

Ex universal measurement isolating transformer and trip amplifier for RTD-/ TC temperature and DC-current-/ voltage signals
1-channel measurement isolating transformer and trip amplifier in 22.5 mm width with external power supply, for capturing and isolating RTD- / TC sensors, resistors, potentiometers and DC current signals
0(4)...20 mA and voltages 0...12 V from Ex zones 0,1,2. Sensors can be supplied via the 0...20 mA current loop. The output can be operated as either an active 0(4)...20 mA signal or as a passive 4...20 mA current loop. A relay contact (NO) is available on the output side for limit value monitoring. Status/error messages are issued via a relay contact (NO). The component can be configured using standard FDT/DTM software.

Add-on housing for TS35 rail mounting
Dimensions: L/W/H
119.2/ 22.5/ 113.6
Screw connection/
Nominal cross-section
2.5 mm²
Protection degree: IP
20
Input RTD:
PT100, PT500, PT1000,
Ni50, Ni100, Ni120,
Ni1000

Resistance 0...10
kOhm / Potentiometer
10 Ohm... 10 kOhm
TC-
Type: B, E, J, K, N, R, S,
T, U, L

0(4)...20 mA

0...12 V/ 2...10 V
Sensor supply 28...16.5
VDC / 0...20 mA

Creation date January 28, 2023 4:11:55 PM CET

Output

Catalogue status 24.01.2023 / We reserve the right to make technical changes.

0(4)...20 mA / 20..0 mA

ACT20X-HUI-SAO-S

Weidmüller Interface GmbH & Co. KG
 Klingenbergstraße 26
 D-32758 Detmold
 Germany

www.weidmueller.com

Technical data

Environmental Product Compliance

REACH SVHC	Lead 7439-92-1
SCIP	2f6dd957-421a-46db-a0c2-cf1609156924

Approvals

Approvals



Approvals	DNVGL;
ROHS	Conform
UL File Number Search	UL Website
Certificate no. (cULus)	E337701

Downloads

Approval/Certificate/Document of Conformity	Certification SIL Certification DNV GL Certification ATEX Certification IECEX Certification UL Declaration of Conformity
Engineering Data	CAD data – STEP
Engineering Data	WSCAD
Software	Library and function block – WI-Manager, DTM-Library for online installation Release notes for Weidmueller FDT-DTM Software version
User Documentation	Instruction sheet Safety Manual for SIL application Handbuch ACT20X- Serie, deutsch Manual ACT20X- series, english 20210120 Security Advisory - WI-Manager affected by MundM Software fdtCONTAINER vulnerability
Catalogues	Catalogues in PDF-format
Brochures	

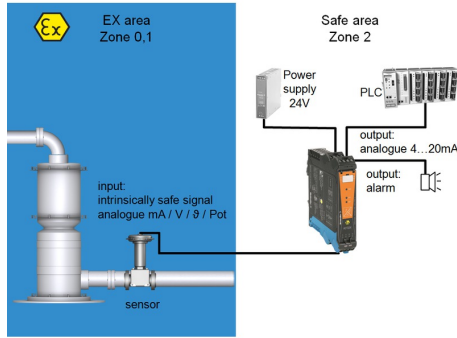
ACT20X-HUI-SAO-S

Weidmüller Interface GmbH & Co. KG
 Klängenbergstraße 26
 D-32758 Detmold
 Germany

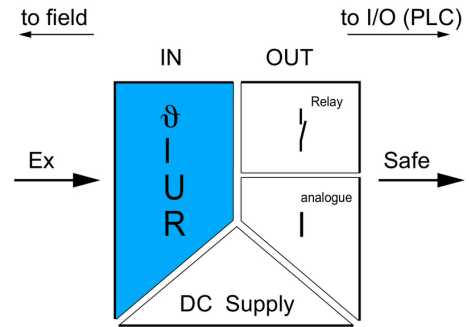
www.weidmueller.com

Drawings

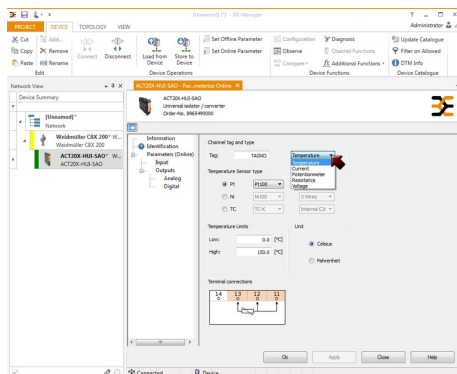
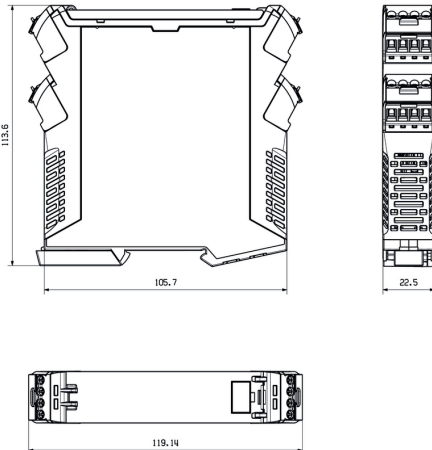
Application



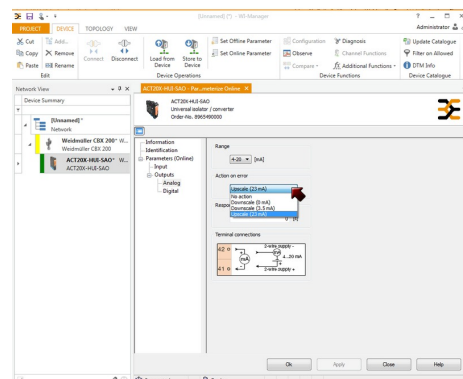
Block diagram



Dimensioned drawing



screenshot of temperature input configuration with FDT2 / DTM software



screenshot of output configuration with FDT2 / DTM software

ACT20X-HUI-SAO-S

Weidmüller Interface GmbH & Co. KG
 Klingenbergstraße 26
 D-32758 Detmold
 Germany

www.weidmueller.com

Accessories

Configuration interfaces



General ordering data

Type	CBX200 USB
Order No.	8978580000
GTIN (EAN)	4032248813759
Qty.	1 pc(s).

Cold-junction compensation terminals



General ordering data

Type	ACT20X-CJC-HTI-S PRT 21	Version
Order No.	1160650000	(CJC) cold-junction compensation terminal for ACT20X thermal
GTIN (EAN)	4032248948352	module, built-in PT100 sensor, Labelling for channel 2 (21, 22, 23,
Qty.	1 pc(s).	24)

ACT20X-HUI-SAO-S

Weidmüller Interface GmbH & Co. KG
 Klingenbergstraße 26
 D-32758 Detmold
 Germany

www.weidmueller.com

Accessories

Blank



ESG is the tried-and-tested marker in MultiCard format for use on many well-known electrical devices. The result is high-quality device marking with a high-contrast appearance.

Various types are available for devices from manufacturers like Siemens, ABB, Beckhoff etc. Advantages at a glance:

- Tags for universal usage, self-adhesive or clip-on tags, depending on type
- For aligned equipment, e.g. circuit breakers, we supply ESG markers for clipping onto tag rails
- Individual laser-quality printing according to specifications

For custom printing: Please send us a file of our labeling software M-Print PRO or M-Print PRO Online (without installation) for your labeling specifications.

General ordering data

Type	ESG 6.6/20 BHZ 5.00/04	Version
Order No.	1082540000	ESG, Device markers x 20 mm, PA 66, Colour: white
GTIN (EAN)	4032248845439	
Qty.	200 pc(s).	

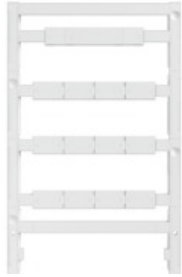
ACT20X-HUI-SAO-S

Weidmüller Interface GmbH & Co. KG
 Klingenbergstraße 26
 D-32758 Detmold
 Germany

www.weidmueller.com

Accessories

Blank



ESG is the tried-and-tested marker in MultiCard format for use on many well-known electrical devices. The result is high-quality device marking with a high-contrast appearance.

Various types are available for devices from manufacturers like Siemens, ABB, Beckhoff etc. Advantages at a glance:

- Tags for universal usage, self-adhesive or clip-on tags, depending on type
- For aligned equipment, e.g. circuit breakers, we supply ESG markers for clipping onto tag rails
- Individual laser-quality printing according to specifications

For custom printing: Please send us a file of our labeling software M-Print PRO or M-Print PRO Online (without installation) for your labeling specifications.

General ordering data

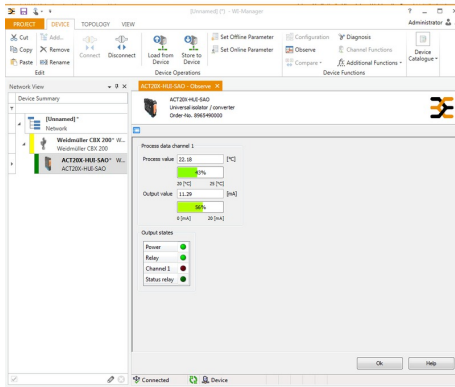
Type	ESG 8/13.5/43.3 SAI AU	Version
Order No.	1912130000	ESG, Device markers x 13.5 mm, PA 66, Colour: Transparent
GTIN (EAN)	4032248541164	
Qty.	5 pc(s).	

ACT20X-HUI-SAO-S

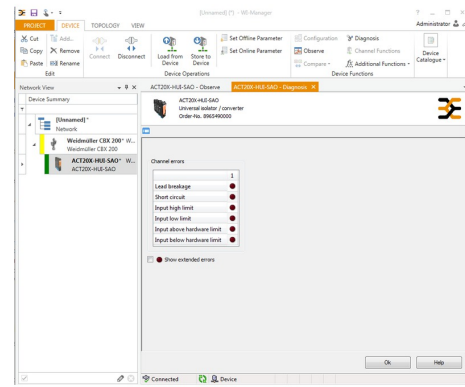
Weidmüller Interface GmbH & Co. KG
 Klingenbergstraße 26
 D-32758 Detmold
 Germany

www.weidmueller.com

Drawings



screenshot of "observe" with FDT2 / DTM software



screenshot of "diagnosis" with FDT2 / DTM software

Connection diagram

